

HEAVY DUTY CLAMPS

T-Bolt Heavy Duty Hose Clamp



HCL's T-Bolt Hose clamps provide a leak-proof, heavy duty, durable and corrosion resistant clamping solution. Commonly found in the US market, they are regarded as the ideal choice for medium and heavy duty applications and are often used as a hydraulic hose clamping solution.

PERFORMANCE	Strength	
	Temperature	
	Speed	
	Weathering	
	Chemical	
	Dynamic Range	

Applications

- Automotive
- Irrigation
- Ducting
- Medical Industry
- Industrial Cleaners
- Pharmaceutical

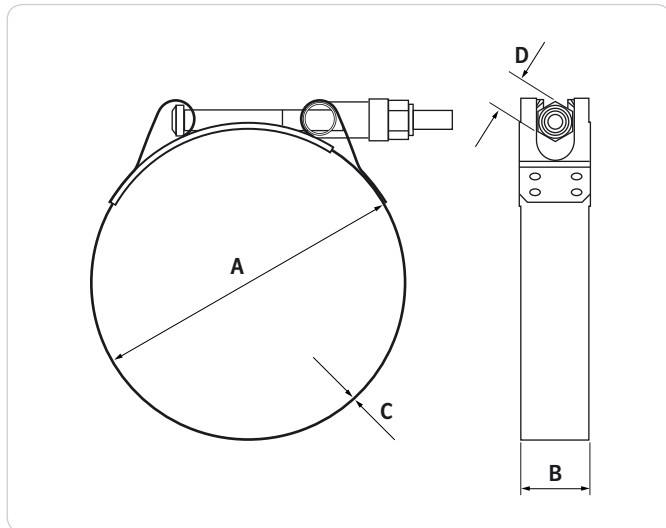
Materials – see section 10.3

- **W2** Screw – Zinc Plated Steel
Band & Housing – 301 SS

On Request

- **W4** 304 SS

Weathering	
Chemical	



HCL Part No	Diameter Range (A) inch	Band Width (B) inch	Band Thickness (C) inch	Nut A/F (D) inch	Max Torque Nm	Box Quantity
TB-34	1.34 – 1.57	0.75	0.02	0.43	8.5	100
TB-40	1.57 – 1.73					
TB-43	1.69 – 1.93					
TB-46	1.81 – 2.05					
TB-51	2.01 – 2.24					
TB-58	2.28 – 2.56					
TB-64	2.52 – 2.83					
TB-70	2.76 – 3.07					
TB-76	2.99 – 3.31					
TB-83	3.27 – 3.58					
TB-89	3.50 – 3.82					
TB-95	3.74 – 4.52					
TB-102	4.02 – 4.33					
TB-108	4.25 – 4.57					
TB-114	4.49 – 4.80					
TB-121	4.76 – 5.08					
TB-127	5.00 – 5.31					
TB-133	5.24 – 5.55					
TB-140	5.51 – 5.83					
TB-146	5.75 – 6.06					
TB-152	5.98 – 6.30					
TB-159	6.26 – 6.57					
TB-165	6.50 – 6.81					
TB-171	6.73 – 7.05					
TB-178	7.01 – 7.32					
TB-184	7.24 – 7.56					
TB-191	7.52 – 7.83					
TB-197	7.76 – 8.07					
TB-203	7.99 – 8.31					

All weights, dimensions & quantities are subject to a 2.5% tolerance. To add material selection to the HCL Part No: for W2, add "-W2".